



EASTERN WHARF

E BOUNDARY ST

CSX RAILROAD

CSX RAILROAD

HARRY TRUMAN PKWY

CITY-SAVANNAH
WATER RECLAMATION

DULANEY AVE

EAST PRESIDENT STREET

EAST PRESIDENT STREET

BEGIN CONSTRUCTION

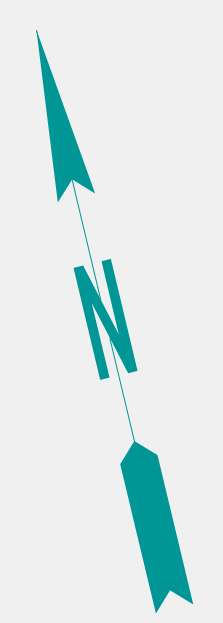
TRAFFIC SIGNAL

END CONSTRUCTION

THE SAVANNAH GOLF CLUB

PRESIDENT SQUARE

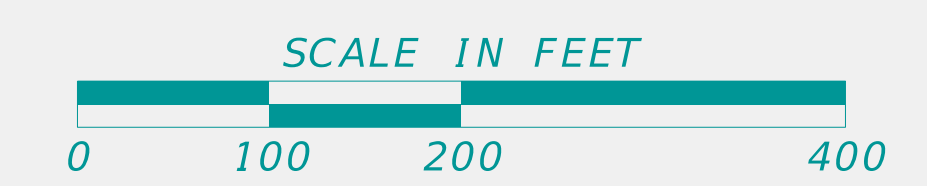
ALTERNATIVE 1: ADDITIONAL WEST BOUND LANE
CONCEPTUAL LAYOUT (SHORT TERM)
PRESIDENT STREET RAILROAD CROSSING ELIMINATION STUDY

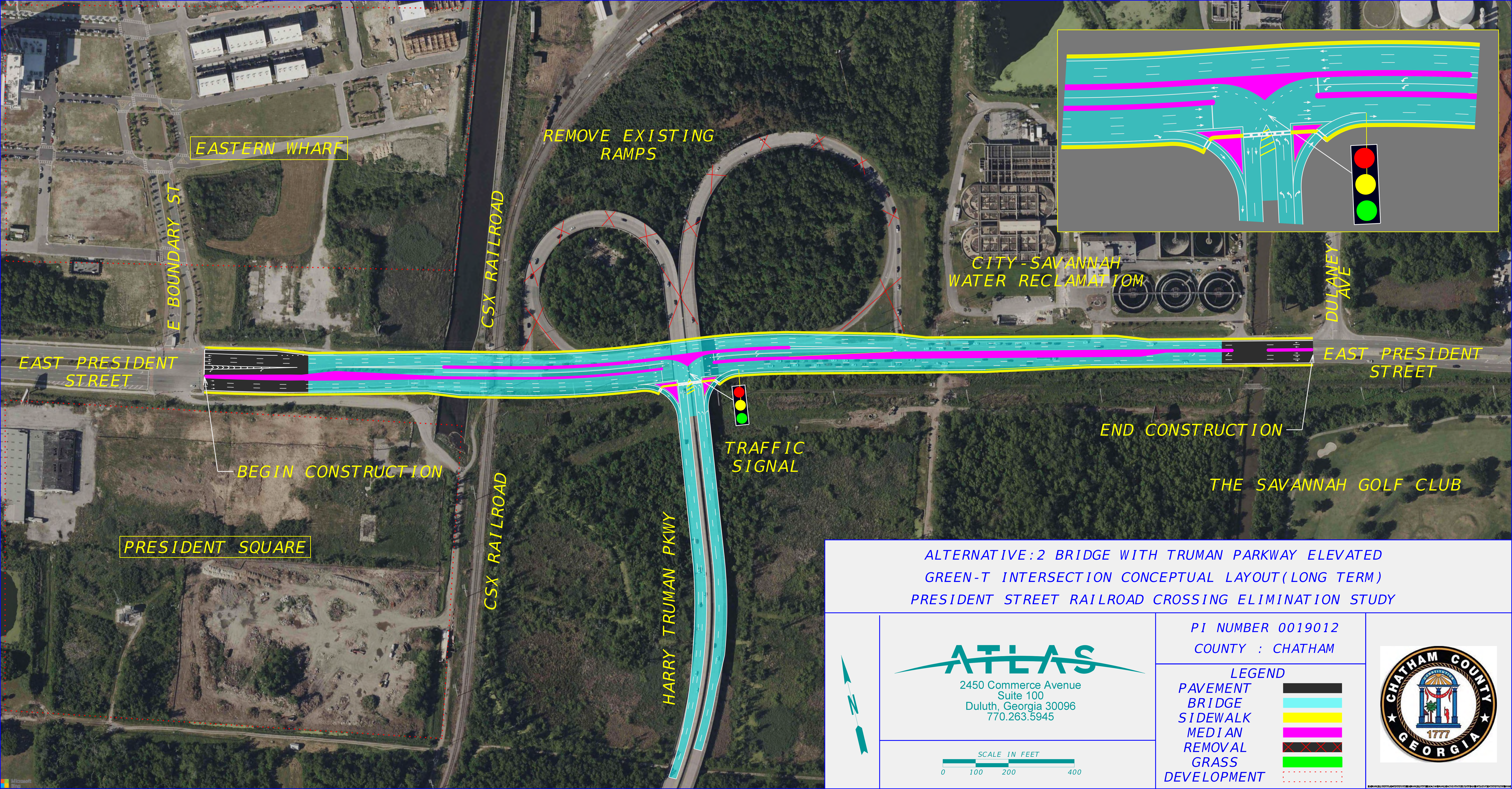


ATLAS
2450 Commerce Avenue
Suite 100
Duluth, Georgia 30096
770.263.5945

PI NUMBER 0019012
COUNTY : CHATHAM
LEGEND

- PAVEMENT
- SIDEWALK
- GRASS
- DEVELOPMENT





EASTERN WHARF

E BOUNDARY ST

REMOVE EXISTING RAMPS

CSX RAILROAD

CITY-SAVANNAH WATER RECLAMATION

DULANEY AVE

EAST PRESIDENT STREET

EAST PRESIDENT STREET

BEGIN CONSTRUCTION

TRAFFIC SIGNAL

END CONSTRUCTION

THE SAVANNAH GOLF CLUB

PRESIDENT SQUARE

CSX RAILROAD

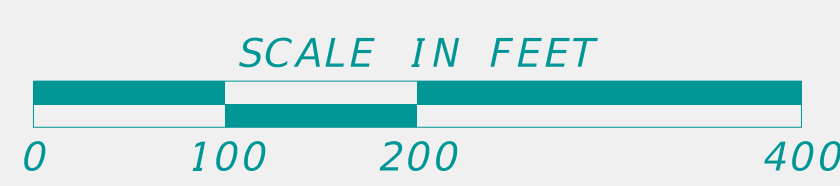
HARRY TRUMAN PKWY

ALTERNATIVE : 2 BRIDGE WITH TRUMAN PARKWAY ELEVATED
 GREEN-T INTERSECTION CONCEPTUAL LAYOUT (LONG TERM)
 PRESIDENT STREET RAILROAD CROSSING ELIMINATION STUDY



ATLAS

2450 Commerce Avenue
 Suite 100
 Duluth, Georgia 30096
 770.263.5945

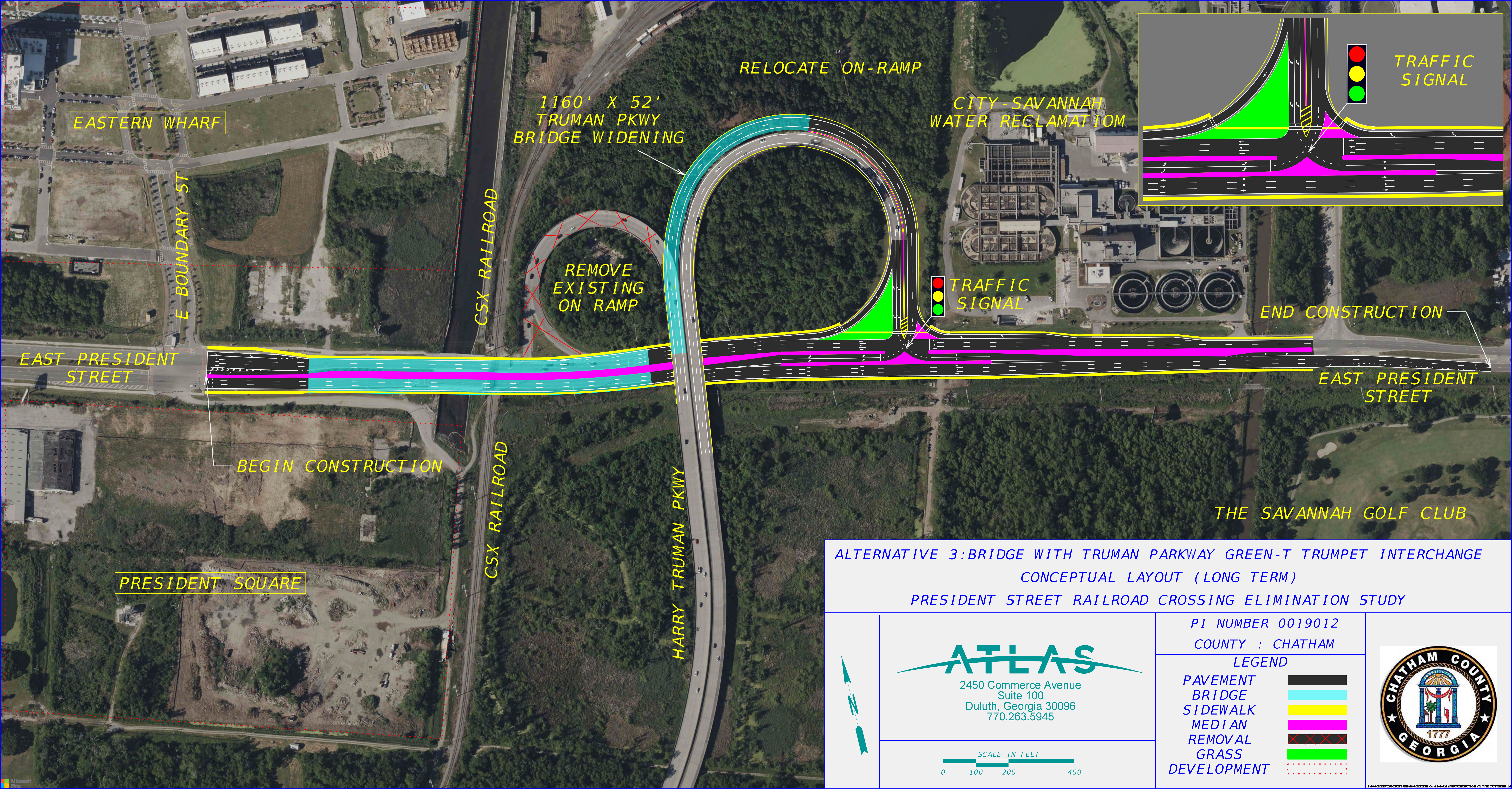


PI NUMBER 0019012
 COUNTY : CHATHAM

LEGEND

PAVEMENT	
BRIDGE	
SIDEWALK	
MEDIAN	
REMOVAL	
GRASS	
DEVELOPMENT	





EASTERN WHARF

E BOUNDARY ST

EAST PRESIDENT STREET

BEGIN CONSTRUCTION

PRESIDENT SQUARE

CSX RAILROAD

CSX RAILROAD

HARRY TRUMAN PKWY

RELOCATE ON-RAMP

1160' X 52'
TRUMAN PKWY
BRIDGE WIDENING

REMOVE
EXISTING
ON RAMP

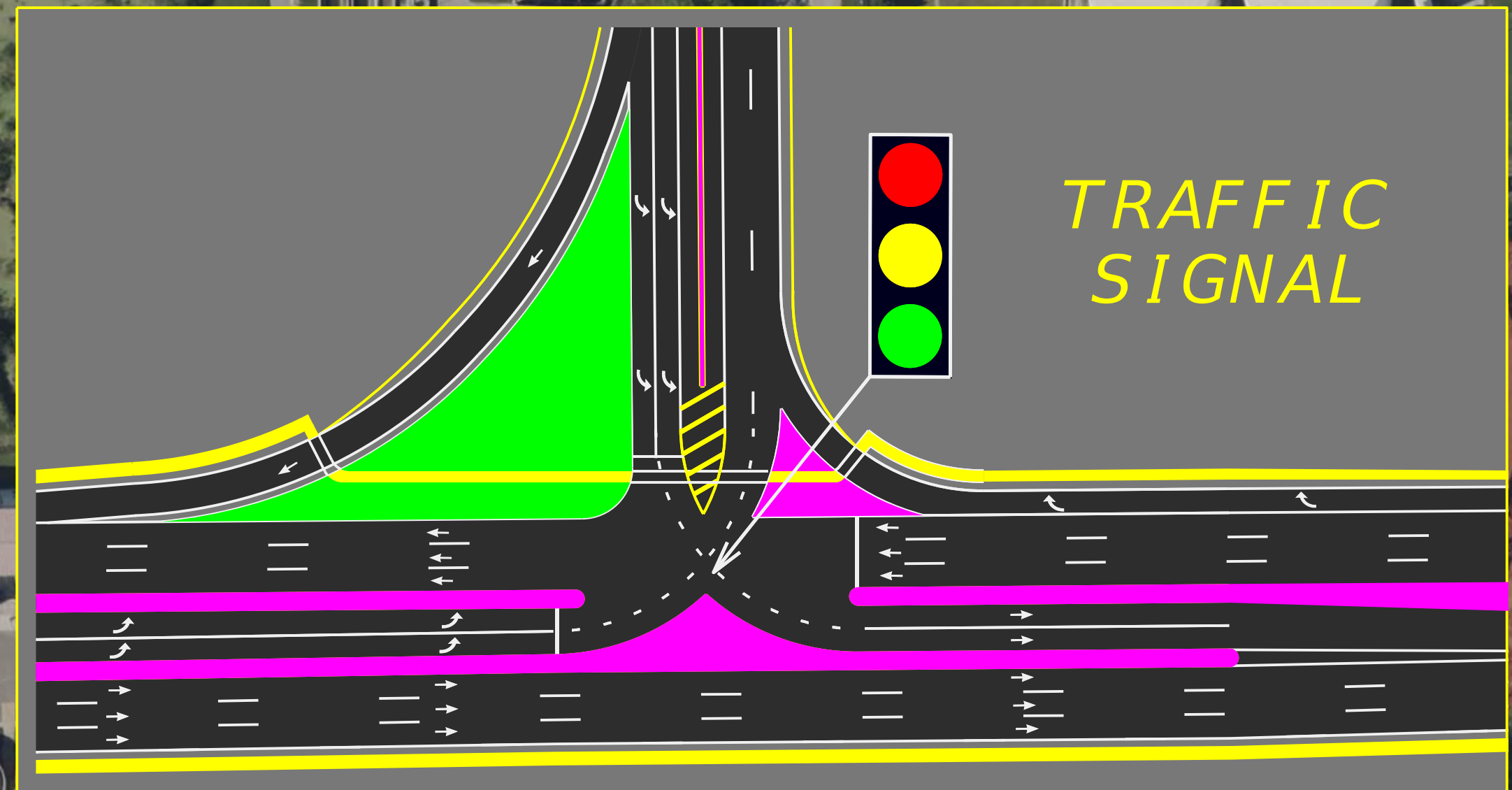
CITY-SAVANNAH
WATER RECLAMATION

TRAFFIC
SIGNAL

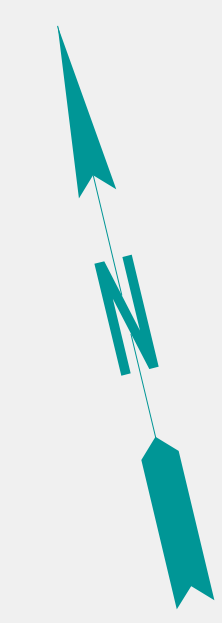
END CONSTRUCTION

EAST PRESIDENT STREET

THE SAVANNAH GOLF CLUB

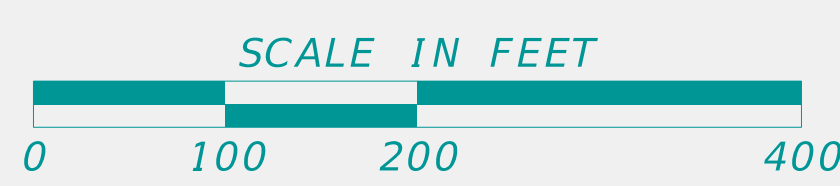


ALTERNATIVE 3: BRIDGE WITH TRUMAN PARKWAY GREEN-T TRUMPET INTERCHANGE
 CONCEPTUAL LAYOUT (LONG TERM)
 PRESIDENT STREET RAILROAD CROSSING ELIMINATION STUDY



ATLAS

2450 Commerce Avenue
 Suite 100
 Duluth, Georgia 30096
 770.263.5945



PI NUMBER 0019012

COUNTY : CHATHAM

LEGEND

- PAVEMENT
- BRIDGE
- SIDEWALK
- MEDIAN
- REMOVAL
- GRASS
- DEVELOPMENT

